

Appendix 1 : Tables & Figures.

Figure 1. Opinion polls 1943-2013 with either the question "Are you for or against the monarchy" or "Do you want to replace the monarchy with an elected president". Percent that supports the monarchy. Large filled circle mark 10-year averages (1960±5 years etc.). Sources: 56 opinion polls from Demoscope, FSI, Ipsos, Consumer data, Novus Opinion, Sifo, SOM Institute, Svenska Gallup, Svenska Testhuset AB, Synovate, Temo & Testkonsult (n=750-3000).

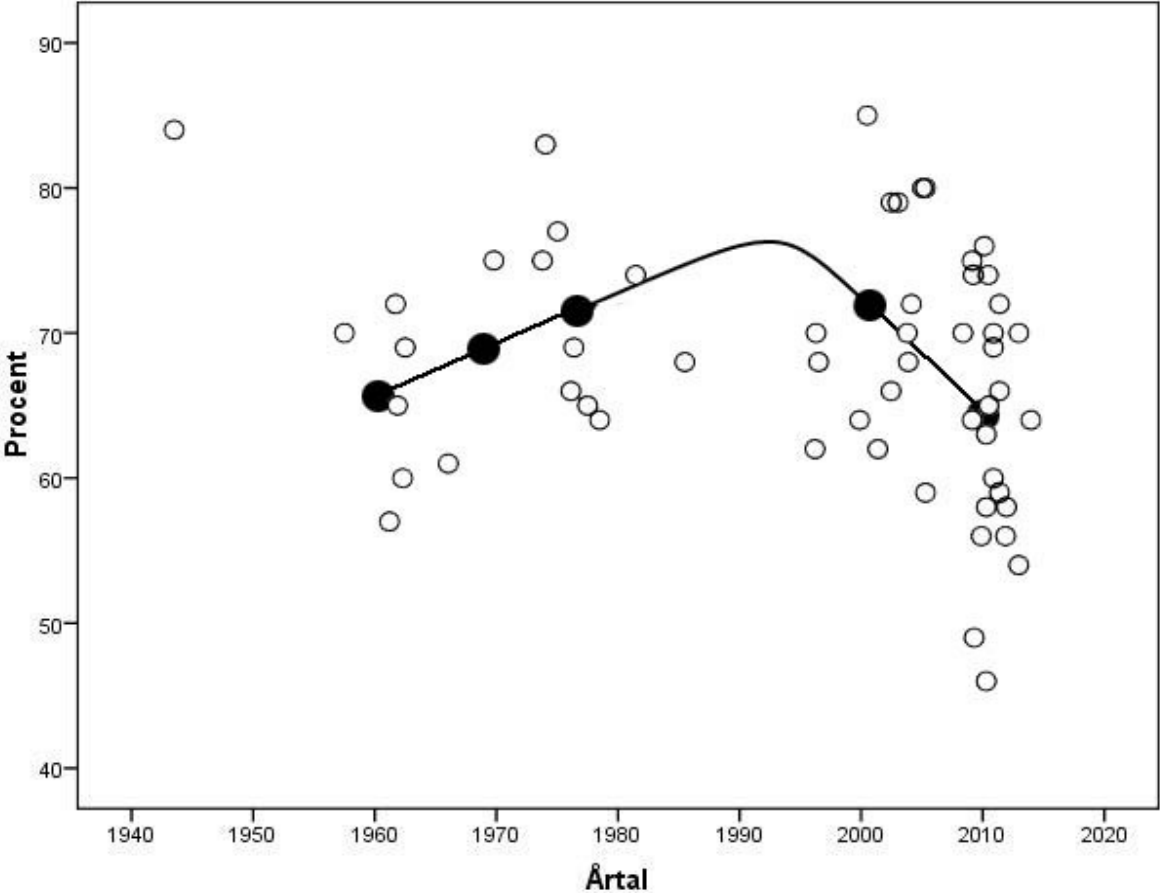


Figure 2. Opinion polls 1980-2019 with the question "Do you trust the royal house". Percent of those who have confidence in the royal house. Sources: 30 opinion polls from Sifo, FSI, Demoscope, Novus Opinion, SOM Institute & Schibsted Inizio (n=750-3000).

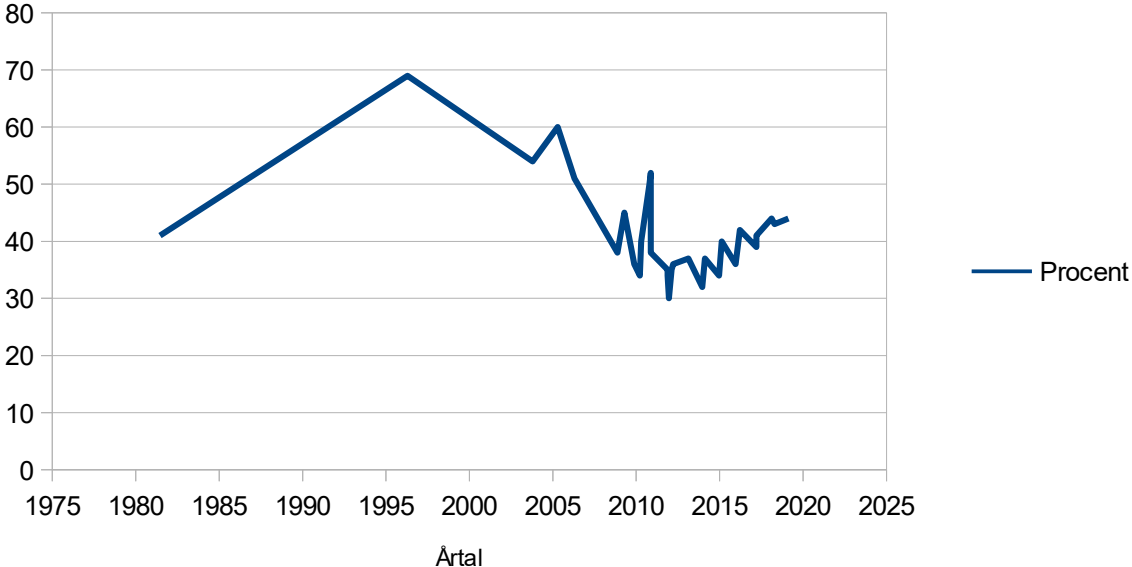


Figure 3. Opinion polls 1981-2016 with the question "Do you trust the royal house". Trust balance (percent positive minus percent negative). Three groups: Population, Journalists & Parliament. Sources: SOM Institute (n≈3000); "journalist survey" (n≈ 1500); "parliament survey" (n≈250) & two further surveys.

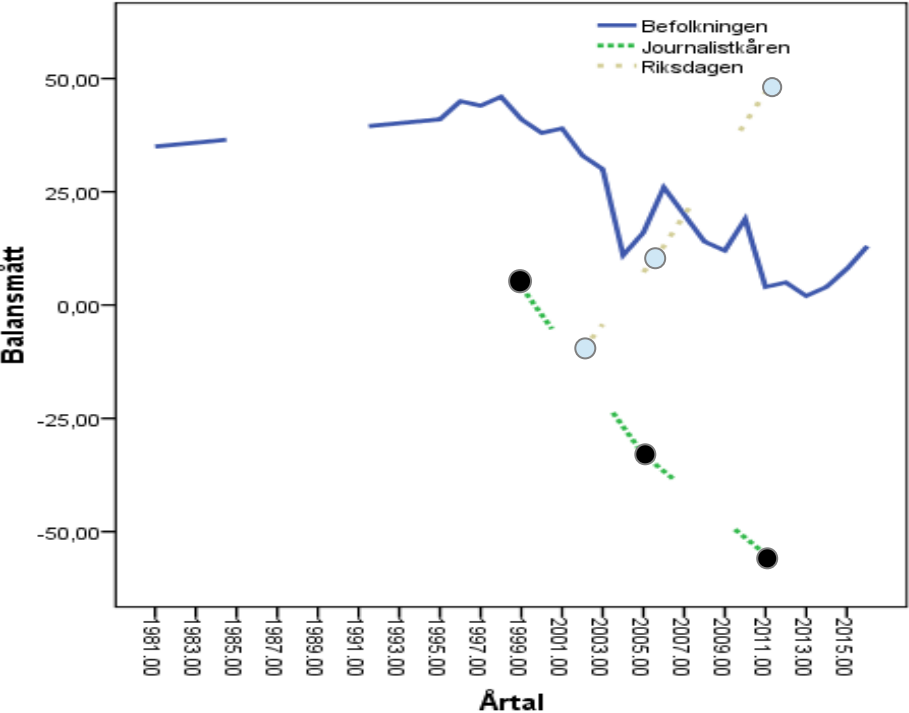


Figure 4. Rank order 1984-2011 of kung Carl Gustaf, queen Silvia and crown princess Victoria according to the criterium Sweden's most popular man or woman. Sources: ICA-kuriren 1984-2007 (n≈1000); SOM-institutet 2008 & 2011 (n≈3000).

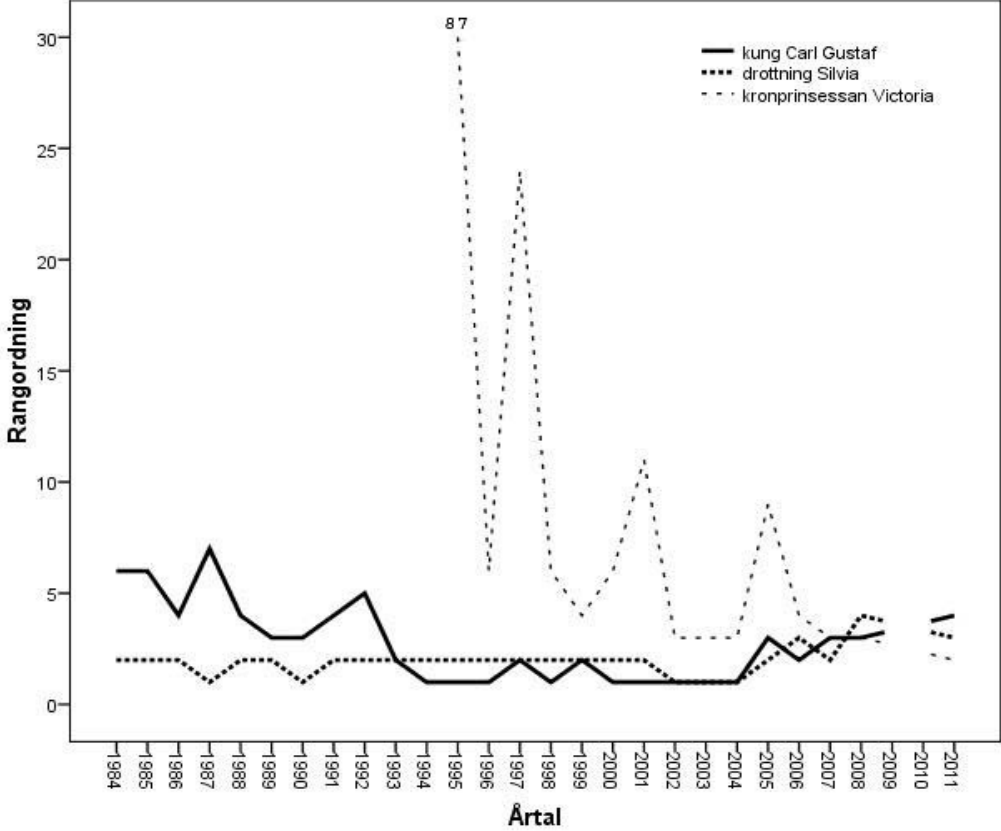


Figure 5. Swedish democracy 1800-2018 (-10=absolute monarchy; +10=full parliamentary democracy). 1809-1811 and 1907-1916 are considered transitional periods. These years are not coded (special code=-88), but the values have been interpolated. (Source: Polity IV)

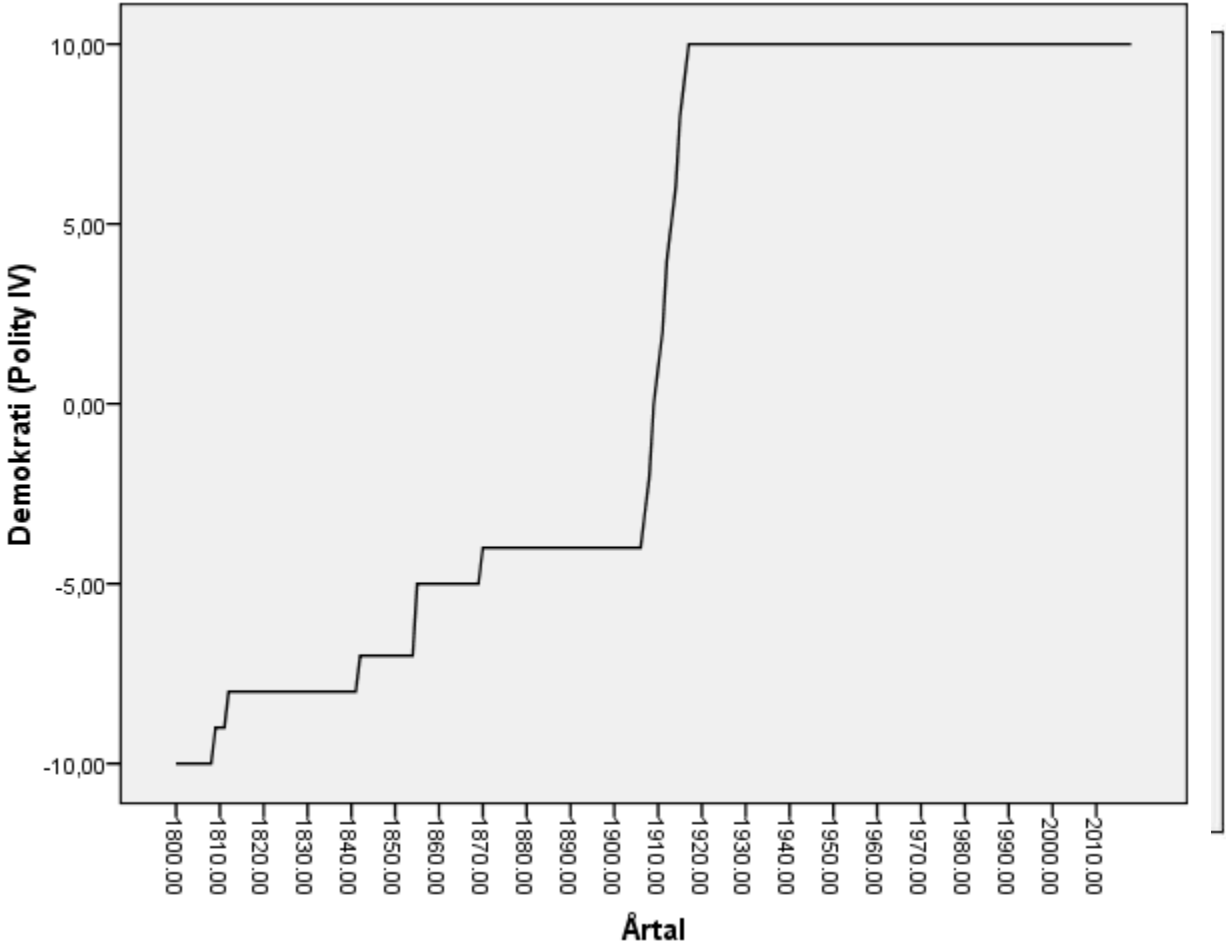


Table 1. The joint activities of King Carl Gustaf and Queen Silvia 1997-2011. Annual averages of number of activities. N=4358 during 15 years. One activity \leq 1 day. The numbers are rounded to the nearest integer.

	N _{CG}	N _{Silvia}
Torekov		
Parliamentary meeting	2	2
Cabinet meeting	4	
Foreign Affairs Committee	6	
Politicians (Swedish)	10	5
Politicians (foreign)	16	5
State visits	16	16
Diplomats	38	6
Protection		
World Scout Foundation	14	3
World Life Fund WWF	5	
Royal Academies	20	9
Other	10	5
Representation		
National Day Celebration	3	3
Inaugurations	16	7
County & Municipal visits	5	3
Foreign travel	8	6
Sports	10	5
Swedish Armed Forces	8	1
Church	8	8
Hunting	4	1
Family	8	8
Scholarships & Medals	24	9
Royal Colloquium	4	1
Other	51	6

Table 2 Queen Silvia's own activities 1997-2011. Annual averages of number of activities. N=1214 during 15 years. One activity \leq 1 day. The numbers are rounded to the nearest integer.

	N _{Silvia}
Protection	
Silviahemmet	11
Mentor Foundation	9
World Childhood	15
Other	6
Representation	
Scholarships	2
Women's associations	2
Other	44

Table 3. What categories of people should the King meet with? Percent. Source: SVT Studio S & Sifo, 1978-04.

Swedish politicians	63
Foreign Heads of State	50
Foreign Royal Houses	33
Diplomats	32
Foreign politicians	28
Workers, officials, disabled & sick	25
Trade Union Confidants, Business Leaders	24
Active in the popular movements	23
...	
Officials	8
Officers	7
Immigrants	7
Priests	4
Swedish nobility	2
Celebrities	1